



## RDES activities

### Community action groups

We work in collaboration with the Running Stream, Bylong, Lue, Mudgee and Merriwa community action groups to provide information to the community about local environmental issues such as long-term water security and air quality.

### Talks and film screenings

We organise talks, meetings and film screenings about issues concerning the environment.

### Rylstone Common

We've collaborated with Mid-Western Regional Council to protect and restore the Rylstone Common. The project is an important bush regeneration site and it supports a variety of local native birds. It has walking trails and facilities for visitors.

### Cudgegong River Foreshore Restoration

We won an Australian Government Envirofund Grant to remove poplar regrowth and revegetate a section of the Cudgegong River foreshore in Rylstone with riparian native trees and shrubs.

### Roadside vegetation study

With government funding we completed a major study of the roadside vegetation in the Rylstone area. This study provides a good understanding of local vegetation and special areas of significance, and assists Mid-Western Regional Council when planning road works. It is also a valuable resource for researchers, teachers and students in environmental management.

### Tree planting

We have planted trees at a number of sites. One of these sites is situated 8 km from Rylstone on the Lue Road. Another is in the grounds of Rylstone Hospital.

### RDES contact details

Rylstone District Environment Society  
PO Box 141, Rylstone NSW 2849  
[info@envirorylstone.org.au](mailto:info@envirorylstone.org.au)

### Come along to our next meeting

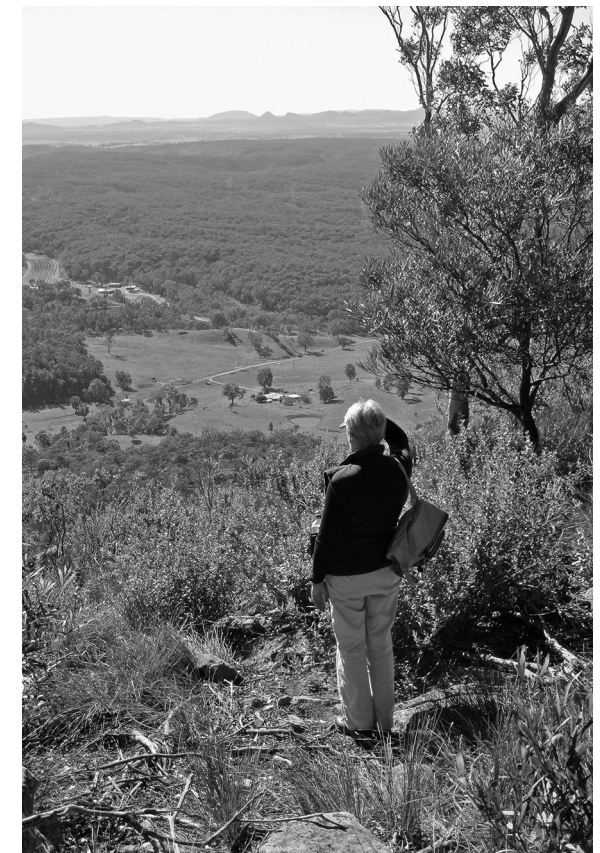
Please visit [www.envirorylstone.org.au](http://www.envirorylstone.org.au) for meeting dates and venues.

Rylstone District Environment Society Inc.  
February 2014

---

# Rylstone District Environment Society Inc.

---



[www.envirorylstone.org.au](http://www.envirorylstone.org.au)



## Rylstone District Environment Society Inc.

[www.envirorylstone.org.au](http://www.envirorylstone.org.au)

### Who are we?

Rylstone District Environment Society Incorporated (RDES) is the local environment group for the townships, villages and localities around Rylstone and Kandos in the NSW Central West. Our members have a diverse range of backgrounds including agriculture, education, law, horticulture, tourism, ceramics, bush regeneration, environmental management, journalism, architecture, engineering, fine arts, building construction, advertising, hospitality and health care.

### What do we do?

We work together to care for the natural environment and share our appreciation of the Rylstone–Kandos area's extraordinary ecology, natural resources and beauty.

We lobby the local council over environmental issues, try to raise awareness of problems, and represent environmental issues on various regional committees such as the Central West Environment Council.

We are affiliated with the Nature Conservation Council (NCC) of NSW and support their campaigns, including writing letters to politicians on issues of state and national importance.

At a more hands-on level we carry out activities like planting trees to help combat salinity and restore degraded land.

We also enjoy one another's company, and our meetings are a pleasant social evening. We often invite a guest speaker to present a talk and lead the discussion.

### Why do we do it?

Many organisations and individuals are now more aware of their impact on the environment than they were twenty years ago, but we still have a long way to go.

We believe that acting locally is the best way we can contribute to making positive changes.

### Application for membership

I would like to join the Rylstone District Environment Society Incorporated:

Name \_\_\_\_\_

Phone no. \_\_\_\_\_

Email \_\_\_\_\_

Postal address \_\_\_\_\_  
\_\_\_\_\_

Enclosed is a cheque for my annual membership (single \$20, family \$30).

I have also included a donation to RDES for \$ \_\_\_\_\_

Please make your cheque out to RDES and mail it to PO Box 141 Rylstone NSW 2849, or come to our next meeting.

### More information

Phone Buzz Sanderson 0417 214 522  
or Jorgen Andersen 6379 6202  
and visit our website at  
[www.envirorylstone.org.au](http://www.envirorylstone.org.au)